


Interesting 10 Lines On Rashtrapati Bhavan In English

 10linesabout.com/10-lines-on-rashtrapati-bhavan-in-english/

February 21, 2025

10 LINES ON RASHTRAPATI BHAVAN IN ENGLISH



Have you ever wondered where the President of India lives? **10 Lines On Rashtrapati Bhavan In English** can help you understand more about this iconic place. Rashtrapati Bhavan is the official home of the President.

It is one of the most iconic buildings in India. Located in New Delhi, it covers 320 acres of land. This grand structure has 340 rooms, big halls, beautiful gardens, and even a museum. It was designed by British architect Edwin Lutyens and completed in 1929.

Earlier, it was called the “Viceroy’s House” when India was under British rule. After independence in 1947, it became the residence of the President. The building is a mix of Indian and European architectural styles.

The Mughal Gardens inside Rashtrapati Bhavan attract thousands of visitors every year. The Change of Guard ceremony, held every Saturday, is another major attraction.

This place is not just a home for the President. It is a symbol of India’s democracy, culture, and heritage. Many important meetings and events are held here. Rashtrapati Bhavan is a must-visit place for those who love history and architecture. It represents the pride and power of the nation.

Five Lines About Rashtrapati Bhavan

1. Rashtrapati Bhavan is the official residence of the President of India, located in New Delhi.

2. It was designed by British architect Edwin Lutyens and completed in 1929.
3. The building has 340 rooms, beautiful Mughal Gardens, and a grand museum.
4. Earlier known as the “Viceroy’s House,” it became the President’s residence after independence in 1947.
5. Rashtrapati Bhavan is a symbol of India’s democracy, culture, and architectural heritage.

Importance of Rashtrapati Bhavan

Rashtrapati Bhavan holds immense significance as the official residence of the President of India. It serves as the center of authority, where major state functions, ceremonies, and meetings take place. It is also a symbol of India’s democratic governance and constitutional values.

What is Unique in Rashtrapati Bhavan?

The uniqueness of Rashtrapati Bhavan lies in its fusion of Indian and Western architectural styles. It combines Mughal and Rajput elements, with a grand central dome, and the Mughal Gardens surrounding the complex. Its design reflects both colonial influences and Indian culture, creating a truly distinctive landmark.

Amazing Facts About Rashtrapati Bhavan

- The building was originally intended to be the residence of the British Viceroy, but it became the official residence of the President after India gained independence.
- The grand dome of the building is inspired by the Buddhist stupa at Sanchi.
- The Mughal Gardens are open to the public during certain times of the year, attracting numerous visitors.
- The Rashtrapati Bhavan has a separate section for state banquets, ceremonies, and functions.

What is Rashtrapati Bhavan Also Known As?

Rashtrapati Bhavan is also known as the “**President’s House**” or “**Viceroy’s House**” (before India’s independence). It is the residence of the President and a seat of political power in India.

10 Lines On Rashtrapati Bhavan In English

Rashtrapati Bhavan is the official residence of the President of India, symbolizing the nation’s democratic strength. This architectural marvel blends history, grandeur, and cultural heritage.

1. It is located in New Delhi and serves as the head of state’s official residence.
2. Designed by Edwin Lutyens, it was completed in 1929 during British rule.
3. The estate spans 320 acres and includes 340 grand rooms.

4. Its Mughal Gardens are famous for their breathtaking seasonal blooms.
5. The architecture beautifully combines Indian and European styles.
6. It was originally known as the “Viceroy’s House” before India’s independence.
7. Important national ceremonies and events take place here.
8. The Change of Guard ceremony attracts many visitors every week.
9. It also houses an impressive museum showcasing India’s history.
10. Rashtrapati Bhavan stands as a powerful symbol of India’s governance and heritage.

100 Words Essay on Rashtrapati Bhavan

Rashtrapati Bhavan is the official residence of the President of India, located in New Delhi. It was designed by the British architect Edwin Lutyens and completed in 1929. The building has 340 rooms and is spread across 330 acres, including beautiful gardens.

The architecture is a blend of Indian and Western styles, with a large dome inspired by the Buddhist Stupa. The Presidential Palace is not only the home of the President but also a center for official ceremonies.

It symbolizes the authority of the Indian state and holds immense historical and cultural significance.

150 Words Essay on Rashtrapati Bhavan

Rashtrapati Bhavan, the official residence of the President of India, stands as an iconic symbol of the nation’s sovereignty and heritage. Located in New Delhi, it was designed by the renowned British architect Edwin Lutyens and completed in 1929.

The grand structure consists of 340 rooms and covers an area of 330 acres, including lush Mughal Gardens. The architecture blends Western and Indian elements, with its famous dome inspired by the Buddhist Stupa at Sanchi.

It serves as the official residence of the President, but it is also used for hosting dignitaries, official events, and ceremonies. Rashtrapati Bhavan’s main building is a center for political and ceremonial activities, and its historical and cultural significance is immense.

[See also 10 Lines On Aruna Asaf Ali in English](#)

The Bhavan represents the rich history of the country, combining the architectural beauty of both colonial and indigenous styles, making it a prime tourist attraction in India.

200 Words Essay on Rashtrapati Bhavan

Rashtrapati Bhavan, located in the heart of New Delhi, is the official residence of the President of India. Designed by British architect Edwin Lutyens, the building was completed in 1929 and remains one of the most magnificent and iconic structures in the country.

It stands as a symbol of the authority of the Indian state, having witnessed many historical milestones. Rashtrapati Bhavan covers an area of 330 acres, with 340 rooms, making it one of the largest residences of any head of state in the world.

The building's architectural style is a blend of Indian and Western elements, combining the Mughal style with elements of European classical architecture. The most prominent feature of the structure is its massive dome, inspired by the Buddhist Stupa at Sanchi.

The gardens surrounding Rashtrapati Bhavan, including the famous Mughal Gardens, are a major tourist attraction.

Rashtrapati Bhavan is not just the residence of the President but also the venue for important state functions and ceremonial events. The building holds immense cultural and political significance. It stands as a reminder of India's colonial past while simultaneously representing its independent future.

300 Words Essay on Rashtrapati Bhavan

Rashtrapati Bhavan, located at Raisina Hill in New Delhi, is the official residence of the President of India. One of the most recognized buildings in the country, it was designed by the renowned British architect Edwin Lutyens and completed in 1929.

The structure is a symbol of the Indian state's authority and its rich historical legacy. Spanning over 330 acres, the Bhavan includes not only the presidential residence but also vast gardens, museums, and ceremonial halls. It has 340 rooms and stands as a majestic architectural feat.

The architectural style of Rashtrapati Bhavan is an exquisite blend of Indian and Western influences. The building has been designed in the Neo-Classical style, with elements of Indian Mughal architecture incorporated into its structure.

The most notable feature of Rashtrapati Bhavan is its large dome, which is inspired by the Buddhist Stupa of Sanchi. The Bhavan is a fine example of the fusion of colonial and indigenous architectural styles, representing both India's past and its aspirations for the future.

Rashtrapati Bhavan is not just the home of the President, but also a venue for important state functions, official meetings, and ceremonial events. It is where foreign dignitaries are hosted and the President's ceremonial duties are carried out.

The Mughal Gardens, located in the Bhavan's vast estate, are open to the public during specific months of the year and are a major attraction for visitors.

The building holds cultural, political, and architectural significance and stands as a proud symbol of India's independence and governance.

500 Words Essay on Rashtrapati Bhavan

Rashtrapati Bhavan, located in New Delhi, is one of the most important and prestigious landmarks in India. Serving as the official residence of the President of India, the Bhavan symbolizes the power and authority of the nation.

Designed by the British architect Edwin Lutyens, it was constructed during the British colonial era, and completed in 1929. It was initially meant to house the Viceroy of India, but after independence, it became the residence of the President. Spanning across 330 acres, Rashtrapati Bhavan is one of the largest presidential residences in the world and boasts 340 rooms.

The building's architecture is a remarkable fusion of Indian and Western styles. While it follows the classical design principles of Western architecture, it incorporates elements from Indian styles, particularly the Mughal style.

The most notable feature is its central dome, inspired by the Buddhist Stupa of Sanchi. The structure also includes grand courtyards, halls, and verandas, reflecting the grandeur and significance of the office of the President.

One of the unique features of Rashtrapati Bhavan is its magnificent Mughal Gardens, which are an example of traditional Mughal landscaping. The gardens include a variety of flowers, trees, and fountains and are open to the public during specific months of the year. |

In addition to the gardens, the Bhavan houses several important sections like the Rashtrapati Bhavan Museum and the Central Hall, where important events and functions are held.

Rashtrapati Bhavan is not just the home of the President; it is also the center of numerous state functions, such as the swearing-in ceremony of the President, ceremonial receptions for foreign dignitaries, and major national events.

The building holds immense cultural and historical significance as it has witnessed numerous political changes, transitions, and moments in the nation's history.

The Bhavan is an architectural marvel and a testament to the British imperial past, yet it simultaneously embodies the nation's independence and democratic values. Over the years, it has become a symbol of India's political strength and pride.

It represents the fusion of diverse cultural elements, combining colonial and Indian traditions in a harmonious way. Moreover, it plays a significant role in hosting key ceremonial events and representing India's global standing.

The President's residence is also an important tourist attraction. The public is allowed to visit parts of the complex during special tours, and the gardens are a major draw for visitors, especially during the annual Udyanotsav, when the gardens bloom in full splendor.

In conclusion, Rashtrapati Bhavan is not merely a building; it is a symbol of India's heritage, democracy, and its rich political history. It serves as a reminder of India's colonial past while showcasing the country's achievements as an independent nation. As a center of power, it continues to play a central role in India's political landscape.

1000 Words Essay on Rashtrapati Bhavan

Rashtrapati Bhavan, the official residence of the President of India, is a monumental structure located in New Delhi. One of the most iconic buildings in India, it holds significant political, historical, and cultural importance.

See also Best 10 Lines On Madhubani Painting In English

The building, designed by British architect Edwin Lutyens, was completed in 1929 and initially served as the residence of the British Viceroy of India. After India gained independence in 1947, Rashtrapati Bhavan became the official residence of the President of India.

This vast architectural complex, spread over 330 acres, is a symbol of India's political and democratic authority and plays a central role in the country's governance.

Architecture and Design

The design of Rashtrapati Bhavan is a remarkable fusion of Western and Indian architectural styles, which was a key feature of the British colonial approach to architecture.

Edwin Lutyens, who designed the building, incorporated European classical elements along with Indian influences, making it a unique structure. The main building is constructed in the Neo-Classical style, with large columns, a central dome, and symmetrical layouts, but the use of Indian motifs and designs is also evident throughout.

The most prominent feature of Rashtrapati Bhavan is its large dome, which is modeled after the Buddhist Stupa of Sanchi. The dome, positioned above the central hall, represents India's cultural heritage and stands as a symbol of its national pride. The central hall, which is the largest room in the building, is used for important state functions and ceremonies.

The Bhavan also contains several beautiful courtyards, gardens, and verandas, which add to its aesthetic appeal. The building is flanked by impressive structures such as the Mughal Gardens, which were designed in the traditional Mughal style.

The gardens are a prime example of Indo-Islamic landscaping and contain a variety of plants, flowers, and fountains that are arranged in symmetrical patterns. Every year, the gardens are open to the public during the Udyanotsav (annual garden festival), allowing citizens to enjoy the beauty of this historical space.

Role of Rashtrapati Bhavan

Rashtrapati Bhavan is not just a residence but also a center for ceremonial, political, and administrative functions. As the official residence of the President, it plays a central role in the functioning of the Indian government.

The President, who is the ceremonial head of state, carries out numerous functions from this residence, including receiving foreign dignitaries, giving speeches, and overseeing the conduct of state business.

The central hall of Rashtrapati Bhavan is where major events take place, such as the swearing-in ceremony of the President and the Prime Minister of India. It is also the venue for the official reception of visiting heads of state and other dignitaries.

The Bhavan plays an essential role during national celebrations such as Republic Day and Independence Day, with the President addressing the nation from the central hall during these events.

Additionally, the building houses important government offices and has become a symbol of India's leadership and governance. It stands as a reflection of the values of democracy and independence that India upholds.

The President, who resides at Rashtrapati Bhavan, has an important constitutional role, acting as a guardian of the Constitution and an ambassador of India's political unity.

Museums and Exhibitions

In addition to its ceremonial functions, Rashtrapati Bhavan also houses several museums and exhibitions that showcase India's rich history and heritage. The Rashtrapati Bhavan Museum Complex, which was inaugurated in 2014, provides an insight into the history of the building, the role of the President, and the functioning of the Indian state.

The museum houses exhibits that include memorabilia related to the history of Rashtrapati Bhavan, the British era, and post-independence India. It also has a collection of gifts received by the President from foreign dignitaries, making it a significant historical site.

Public Access and Tourism

Rashtrapati Bhavan is also a popular tourist destination, with visitors allowed to explore parts of the building and its gardens. The Mughal Gardens are open to the public during the annual Udyanotsav, attracting thousands of visitors.

The gardens are especially beautiful during the spring when flowers are in full bloom. The Rashtrapati Bhavan Museum Complex, open to the public, offers a detailed account of the building's history, making it an educational and cultural destination.

Public access is, however, restricted to specific areas of the Bhavan, with the residence of the President remaining off-limits to the public for security reasons. Nevertheless, the building continues to draw tourists from across the world, owing to its architectural

grandeur and historical significance.

Conclusion

Rashtrapati Bhavan stands as a monumental symbol of India's political and cultural heritage. It reflects the rich historical legacy of the country while showcasing its progress and democracy.

The building's architectural beauty, combined with its role in the nation's governance and its connection to India's colonial past, makes it an integral part of the country's identity.

Rashtrapati Bhavan is not just a presidential residence but a beacon of India's sovereignty, unity, and democratic values. It represents the strength and resilience of the Indian state and continues to inspire generations of citizens and visitors alike.

What Can We See in Rashtrapati Bhavan?

At Rashtrapati Bhavan, visitors can explore the following:

- **Mughal Gardens:** The stunning gardens are an example of Mughal landscaping and are open to the public during specific seasons.
- **The Grand Hall:** The central dome area, which houses the President's office and rooms, is an architectural marvel.
- **Rashtrapati Bhavan Museum:** This museum showcases historical artifacts, including gifts given to Indian Presidents and various aspects of the building's history.
- **The Durbar Hall:** Used for official functions and ceremonies, the hall is an opulent space that displays the grandeur of Rashtrapati Bhavan.

What is Raisina Hill Famous For?

Raisina Hill is famous for being the location of **Rashtrapati Bhavan**, the official residence of the President of India. It also serves as the seat of power in India, housing key government buildings and offering a panoramic view of the capital. The area is often associated with important state functions and ceremonies.

Can a Normal Person Visit Rashtrapati Bhavan?

Yes, normal citizens can visit Rashtrapati Bhavan, but only during specific times of the year. Visits are typically allowed after prior booking, especially to the **Mughal Gardens** and the **Rashtrapati Bhavan Museum**.

[See also Great 10 Lines On Dr Sarvepalli Radhakrishnan In English](#)

A visitor's pass is required for entry, and tours are often conducted in groups. Public access to the President's private residence is not allowed.

Which Circuit is Best in Rashtrapati Bhavan?

The **Mughal Gardens Circuit** is one of the best and most popular circuits in Rashtrapati Bhavan. It provides visitors with access to the beautiful Mughal Gardens, which are spread over a vast area.

Other interesting circuits include the **Museum Circuit**, where you can explore the history and legacy of Rashtrapati Bhavan, and the **Durbar Hall Circuit**, which showcases the grand ceremonial halls of the building.

10 Lines on Rashtrapati Bhavan in English

1. Rashtrapati Bhavan is the official residence of the President of India.
2. It is located in New Delhi, the capital city of India.
3. The building was designed by the British architect Edwin Lutyens.
4. Rashtrapati Bhavan has 340 rooms and is spread across 330 acres of land.
5. The architecture is a mix of Western and Indian styles.
6. The most prominent feature of Rashtrapati Bhavan is its large dome.
7. The Bhavan also has beautiful gardens, including the Mughal Gardens.
8. It was completed in 1929 and was initially the residence of the British Viceroy.
9. After independence, it became the official residence of the Indian President.
10. Rashtrapati Bhavan is an important symbol of India's democracy and history.

10 Lines on Rashtrapati Bhavan for Class 5

1. Rashtrapati Bhavan is the home of the President of India.
2. It is in New Delhi, and is one of the largest Presidential residences in the world.
3. The building was designed by the architect Edwin Lutyens and finished in 1929.
4. It has 340 rooms, and covers an area of 330 acres.
5. Rashtrapati Bhavan is a blend of Indian and Western architecture.
6. The dome of the building is inspired by the Buddhist Stupa at Sanchi.
7. The Mughal Gardens in the Bhavan are famous for their beautiful flowers and fountains.
8. The Bhavan is not only a home but also a place for important government functions.
9. The President of India uses Rashtrapati Bhavan for meetings with foreign dignitaries.
10. It is a symbol of India's history, power, and democracy.

10 Lines on Rashtrapati Bhavan for Class 4

1. Rashtrapati Bhavan is the official residence of the President of India.
2. It is located in New Delhi, the capital city of India.
3. It was designed by Edwin Lutyens and completed in 1929.
4. Rashtrapati Bhavan has 340 rooms and is very large.
5. The building has a big dome on top that is inspired by an ancient Indian Stupa.
6. The Bhavan has beautiful gardens, like the Mughal Gardens.
7. The gardens are open to the public during certain months of the year.
8. Rashtrapati Bhavan is also used for ceremonies and important meetings.

9. The President of India lives and works in this grand building.
10. It is an important symbol of India's history and power.

10 Lines on Rashtrapati Bhavan in Hindi

1. राष्ट्रपति भवन भारत के राष्ट्रपति का आधिकारिक आवास है।
2. यह नई दिल्ली में स्थित है, जो भारत की राजधानी है।
3. इसे ब्रिटिश आर्किटेक्ट एडविन लुटियन्स ने डिज़ाइन किया था।
4. राष्ट्रपति भवन में 340 कमरे और 330 एकड़ का क्षेत्रफल है।
5. इसकी वास्तुकला में भारतीय और पश्चिमी शैलियों का मिश्रण है।
6. भवन का सबसे प्रमुख हिस्सा इसका बड़ा गुंबद है, जो भारतीय स्तूप से प्रेरित है।
7. राष्ट्रपति भवन के बगीचे बहुत सुंदर हैं, जिनमें मुगल बाग शामिल हैं।
8. यह भवन केवल राष्ट्रपति का आवास नहीं, बल्कि कई महत्वपूर्ण समारोहों का स्थल भी है।
9. राष्ट्रपति भवन में विदेशी राजदूतों से मुलाकातें और सरकारी कार्य होते हैं।
10. राष्ट्रपति भवन भारत के इतिहास, शक्ति और लोकतंत्र का प्रतीक है।

Five Lines on Rashtrapati Bhavan

1. Rashtrapati Bhavan is the President of India's official residence.
2. It is located in New Delhi and was completed in 1929.
3. The building has 340 rooms and large gardens.
4. It was designed by architect Edwin Lutyens.
5. Rashtrapati Bhavan is an important symbol of India's governance.

10 Lines on Rashtrapati Bhavan for Class 3

1. Rashtrapati Bhavan is the home of the President of India.
2. It is very big and has 340 rooms.
3. The building is in New Delhi, the capital city of India.
4. It was built in 1929 by a famous architect named Edwin Lutyens.
5. The building has a big round dome on top.
6. The Mughal Gardens in the Bhavan are very pretty.
7. The gardens have many flowers and fountains.
8. The President works and lives in this big building.
9. People can visit the gardens during special times of the year.
10. Rashtrapati Bhavan is a symbol of India's strength and democracy.

10 Lines on Rashtrapati Bhavan for Class 1

1. Rashtrapati Bhavan is the President's house.
2. It is in New Delhi, the capital of India.
3. It is very big and has many rooms.
4. The building is very old and was built in 1929.
5. There is a big dome on top of the building.
6. Rashtrapati Bhavan has beautiful gardens with flowers.
7. The President lives and works in this house.

8. People can visit the gardens during certain months.
9. The Bhavan is very important for the country.
10. It shows India's history and power.

10 Lines on Rashtrapati Bhavan for Class 2

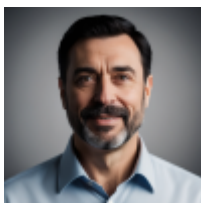
1. Rashtrapati Bhavan is the official home of the President of India.
2. It is in New Delhi and is very big.
3. The building was completed in 1929 and designed by an architect named Edwin Lutyens.
4. Rashtrapati Bhavan has 340 rooms and beautiful gardens.
5. The dome on the building is very big and round.
6. The gardens are called the Mughal Gardens and are very colorful.
7. The President of India lives and works in this building.
8. It is also a place for many important meetings and ceremonies.
9. People can visit the gardens in spring to see the flowers.
10. Rashtrapati Bhavan is a proud symbol of India's history.

Final Words

Rashtrapati Bhavan is more than just a building. It is a symbol of India's rich history and democracy. Every corner of this place tells a story. The grand structure, stunning gardens, and historical importance make it unique. It stands as a reminder of India's journey from British rule to becoming the world's largest democracy.

Today, it is not just a home for the President. It also serves as a venue for important events and cultural programs. Visitors from all over the country come to see its beauty. The Mughal Gardens, museum, and grand halls attract thousands of tourists every year.

If you ever visit New Delhi, do not miss Rashtrapati Bhavan. It is a perfect place to witness history, culture, and architecture. This majestic building continues to inspire and reflect the greatness of India.



Alberto Robino

Alberto Robino is a passionate content creator who specializes in sharing concise, insightful, and engaging 10-line facts on a variety of topics. With a love for simplifying complex ideas, he enjoys providing quick, digestible information to help people learn fast.